

Architect:
 MKThink
 Roundhouse One, 1500 Sansome Street
 San Francisco, CA 94111
 p 415 402 0888

Project:
 200 McALLISTER 6TH FLOOR

Project Number:
 491-404-2

Clients:
 University of California
 Hastings College of the Law



| Rev. | Issue | Date |
|------|-----------------|-----------|
| 1 | DRAFT BID SET | 1/26/2018 |
| 2 | ISSUED FOR BID | 4/18/2018 |
| 3 | BID ADDENDUM #1 | 5/15/2018 |

Seal:

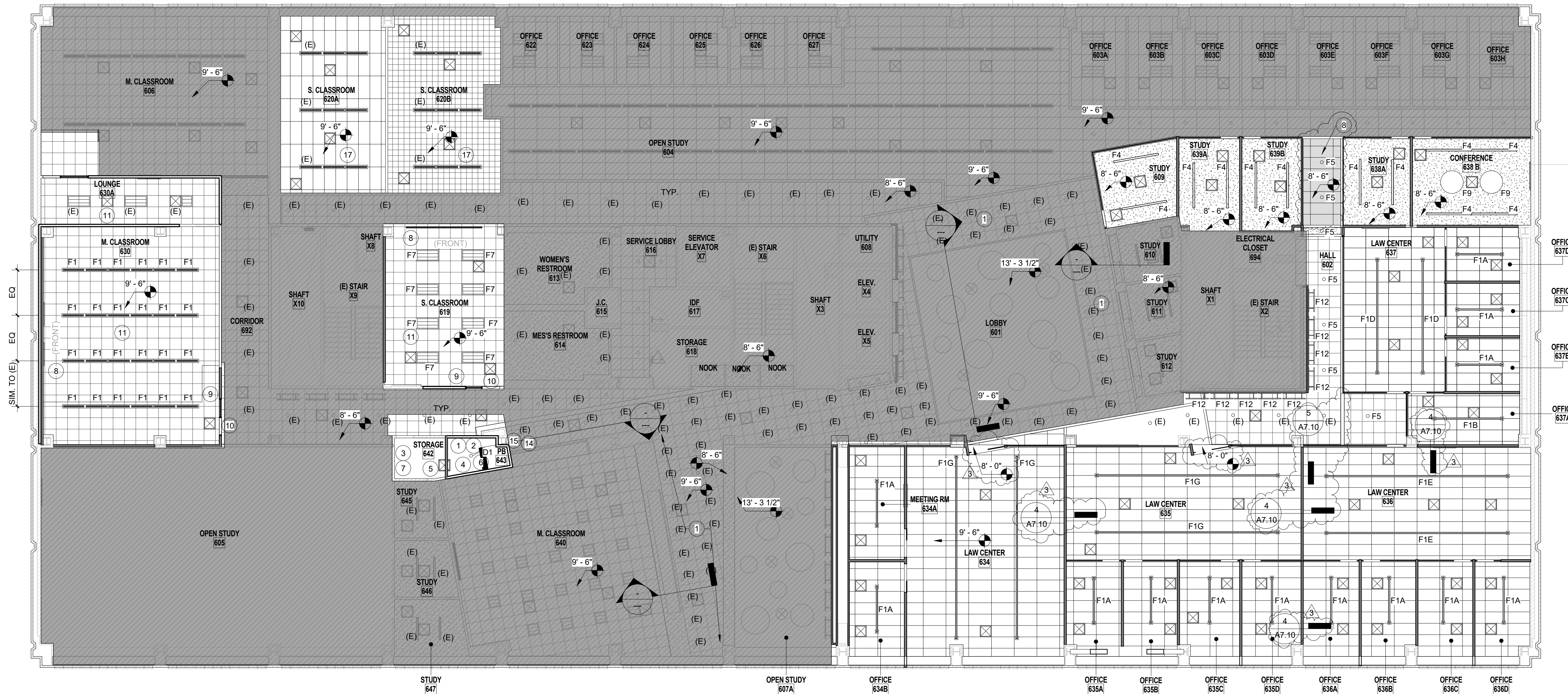
FOR REFERENCE ONLY

Scale: **As indicated**



Drawing Description:
REFLECTED CEILING PLAN - LEVEL 6
 Date: 05/15/2018
 Drawn by: BH Checked by: SK
 Sheet Number:

A2.11



① 6TH FLOOR REFLECTED CEILING PLAN
 3/32" = 1'-0"

KEYNOTES

- ① NO LAY IN CEILING OR SPRINKLER CHANGE
- ② PAINT UNDERSIDE OF STRUCTURE/UTILITY WHITE
- ③ RELOCATE THERMOSTAT
- ④ REBALANCE CFM AIRFLOW @ PB, NO NEW AIR SUPPLY TO (E) STORAGE UNLESS REQ'D.
- ⑤ INSTALL (N) AIR RETURN DUCT IN STORAGE RM @ ELEVATION NEAR (E) RETURN DUCT
- ⑥ PROVIDE (N) PENDANT LIGHT FIXTURE IN PB, OWNER TBD, REMOVE & STORE (E) SURF. MT. UTILITY FIXTURE
- ⑦ MAINTAIN OCCUPANCY SENSOR @ STORAGE RM., NO LIGHTING CHANGE IN STORAGE RM.
- ⑧ REPLACE, PATCH AND/OR REPAIR CEILING IN THIS AREA TO MATCH EXISTING. REUSE EXISTING LAY-IN SYSTEM
- ⑨ MODIFY (E) LIGHTING CIRCUITS FOR PROJECTION & INSTRUCTION SCENES.
 - A. FRONT ROW LIGHTS SWITCHED SEPARATELY
 - B. CLASSROOM LIGHTS 50% / 100% SWITCHING PER T24
 - C. VERIFY ADEQUATE ILLUMINATION THROUGHOUT
 - D. VERIFY ADEQUATE EMERGENCY LIGHTING PER CODE
 - E. CONNECT TO BUILDING LIGHTING CONTROL
- ⑩ PROVIDE (N) SWITCHING, AS REQ'D.
- ⑪ INSTALL (N) ILLUMINATED 'EXIT' SIGN @ DOOR PER OWNER STANDARD
- ⑫ RE-BALANCE CFM FLOW FOR ROOM AS REQ'D
- ⑬ MODIFY CEILING AREA @ 'OPEN STACK' / 'CLASSROOM', AS REQ'D, SEE KEYNOTE 10 ON A1.01
- ⑭ REMOVE, SALVAGE & STORE ALL (E) RECESSED 'CAN LIGHTS' NOT BEING USED.
- ⑮ INSTALL NEW PENDANT LIGHT FIXTURE - SEE ELECTRICAL
- ⑯ MODIFY THE CIRCUIT LIGHTING FOR ROOMS 642 AND 643 - SEE ELECTRICAL
- ⑰ INSTALL (N) MECH EQUIP. ROOM 620A AND 620B - S.M.D.

LIGHTING FIXTURE SCHEDULE

| Type Mark | Manufacturer | Description |
|-----------|----------------------------|---|
| D1 | T.B.D. | 6" PENDANT ROUND L.E.D |
| F1A | Fluxwerx Illumination, Inc | PROFILE : SUSPENDED L.E.D. LINEAR FIXTURE 2 (x) 4FT = 8' LENGTH UNITS |
| F1B | Fluxwerx Illumination, Inc | PROFILE : SUSPENDED L.E.D. LINEAR FIXTURE 1 (x) 2FT LENGTH UNITS + 1 (x) 4FT LENGTH UNITS |
| F1D | Fluxwerx Illumination, Inc | PROFILE : SUSPENDED L.E.D. LINEAR FIXTURE 3 (x) 4FT = 12' LENGTH UNITS |
| F1G | Fluxwerx Illumination, Inc | PROFILE : SUSPENDED L.E.D. LINEAR FIXTURE 4 (x) 4FT = 16' LENGTH UNITS |
| F2 | T.B.D. | FLUXWERX ILLUM.- PENDANT LINEAR 4' LENGTH |
| F4 | Finelite, Inc | LINEAR RECESSED 8' LENGTHS |
| F5 | FOCAL POINT | 6" L.E.D. RECESSED CAN |
| F7 | T.B.D. | 2X4 RECESSED L.E.D. |
| F8 | Delray Lighting | Cylindro II Deco LED With Opal Acrylic Diffuser 36 Inch |
| F12 | VODE | WING RAIL107/ WALL ARM- AT LIVING WALL LOCATIONS |

GENERAL NOTES

- 1. ALL FIXTURES TO BE RELOCATED IN THE CENTER OF ROOM, U.O.N.
- 2. EGRESS LIGHTING SHALL COMPLY WITH 2016 CBC SECTION 1066; EGRESS ILLUMINATION SHALL NOT BE LESS THAN 1 FOOTCANDLE AT THE WALKING SURFACE. LUMINARIES SHALL BE INSTALLED WHENEVER EXITS SIGNS ARE REQUIRED AS SPECIFIED IN SECTION 1011.
- 3. VERIFY ALL (E) DIFFUSER LOCATIONS AND MAINTAIN RELOCATE DIFFUSER ACCORDINGLY.
- 4. ARCHITECTURAL DRAWINGS ARE FOR LOCATION ONLY. SEE ELECTRICAL AND AV DRAWINGS FOR SPECIFICATIONS.
- 5. PATCH AND REPAIR EXISTING EXPOSED CONCRETE SLAB AND BEAMS
- 6. SEE SHEET G0.02 FOR GENERAL NOTES AND ABBREVIATIONS.
- 7. REBALANCE MECHANICAL CFM FLOW FOR ALL NEW ROOMS AS REQUIRED.

CEILING LEGEND

- N.I.C.
- GYPSUM SOFFIT/CEILING
- OPEN CEILING PTD. PT-5 U.O.N.
- ACT 2' X 2'
- ACT 2' X 4'
- CEILING SUSPENDED LINEAR PENDANT
- RECESSED CAN
- RECESSED LINEAR
- CEILING MOUNTED PENDANT
- 2' X 2' RECESSED IN-LAY FIXTURE
- 2' X 4' RECESSED IN-LAY FIXTURE
- 2' X 2' DIFFUSER
- ROUND DIFFUSER (EXPOSED AT OPEN CEILING LOCATIONS)