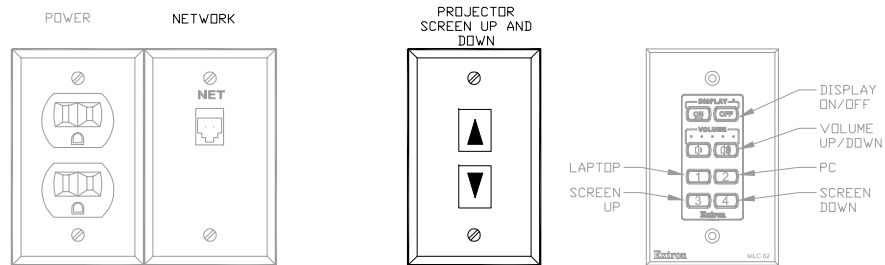
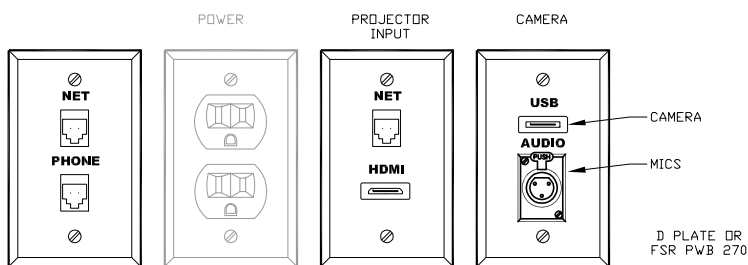


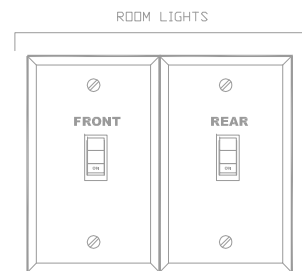
1 FLOOR PLAN
1/4" = 1'-0"



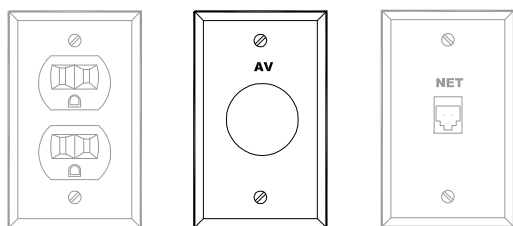
2 A PLATES MOUNTED ABOVE DESK HEIGHT



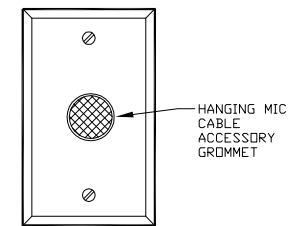
3 D PLATE MOUNTED 18" AFF



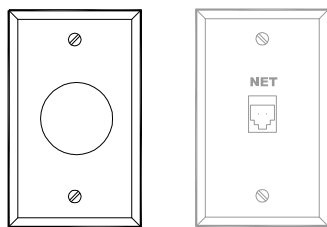
6 LIGHT CONTROLS BY OTHERS



4 VP: VIDEO PROJECTOR



7 MICROPHONE PLATE



5 CAMERA PLATE

ABBREVIATIONS

- AV= AUDIO VIDEO INPUT PLATE AT +18"
C= CEILING MOUNTED CAMERA
CF= CENTER ON FURNITURE
CP= CONTROL BUTTON PANEL AT +52"
M1, M2= CEILING MOUNTED MICROPHONE
S= RECESSED CEILING MOUNTED LOUDSPEAKERS
VM= VIDEO MONITOR RECESS MOUNTED BACK BOX
FSR MODEL PWB-270
VP= VIDEO PROJECTOR

NOTES

1. POWER, NETWORK AND RECEPTACLES BY OTHERS.
2. SCREEN SWITCH INSTALLED BY ELECTRICAL CONTRACTOR.
3. MOUNT PLATES AT ELEVATIONS SHOWN BY THE ARCHITECT.

AV-01

TRAINING ROOM PLAN AND PLATES AND PANELS

SHEETS REF:
TBD

REVISION:

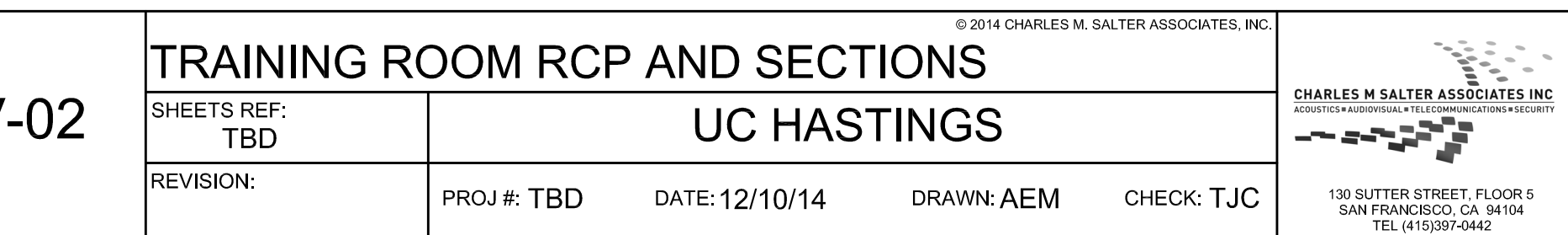
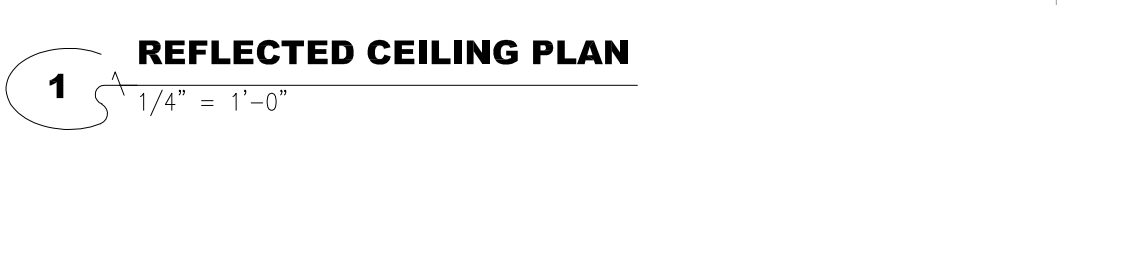
UC HASTINGS

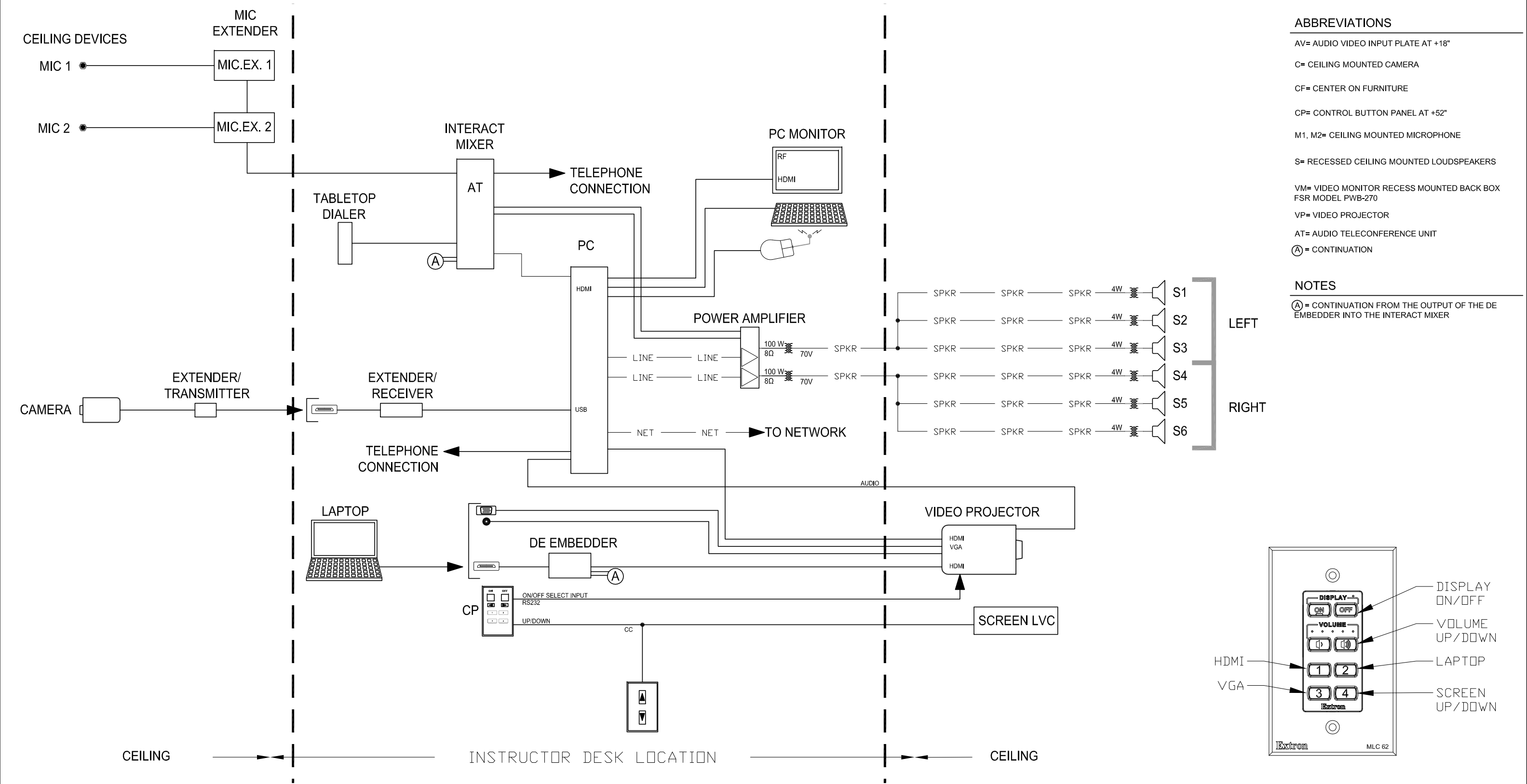
PROJ #: TBD

DATE: 12/10/14

DRAWN: AEM

CHECK: TJC



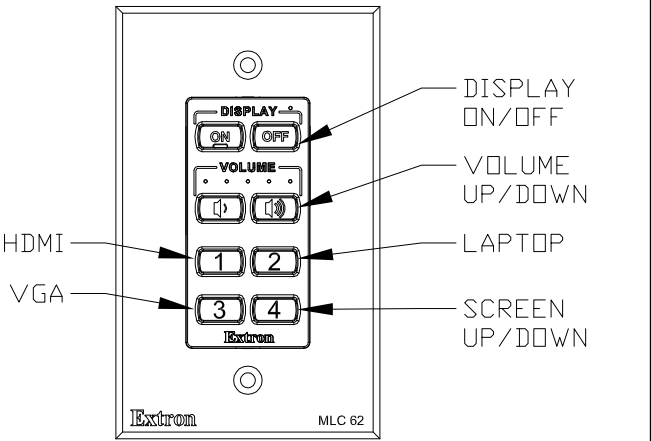


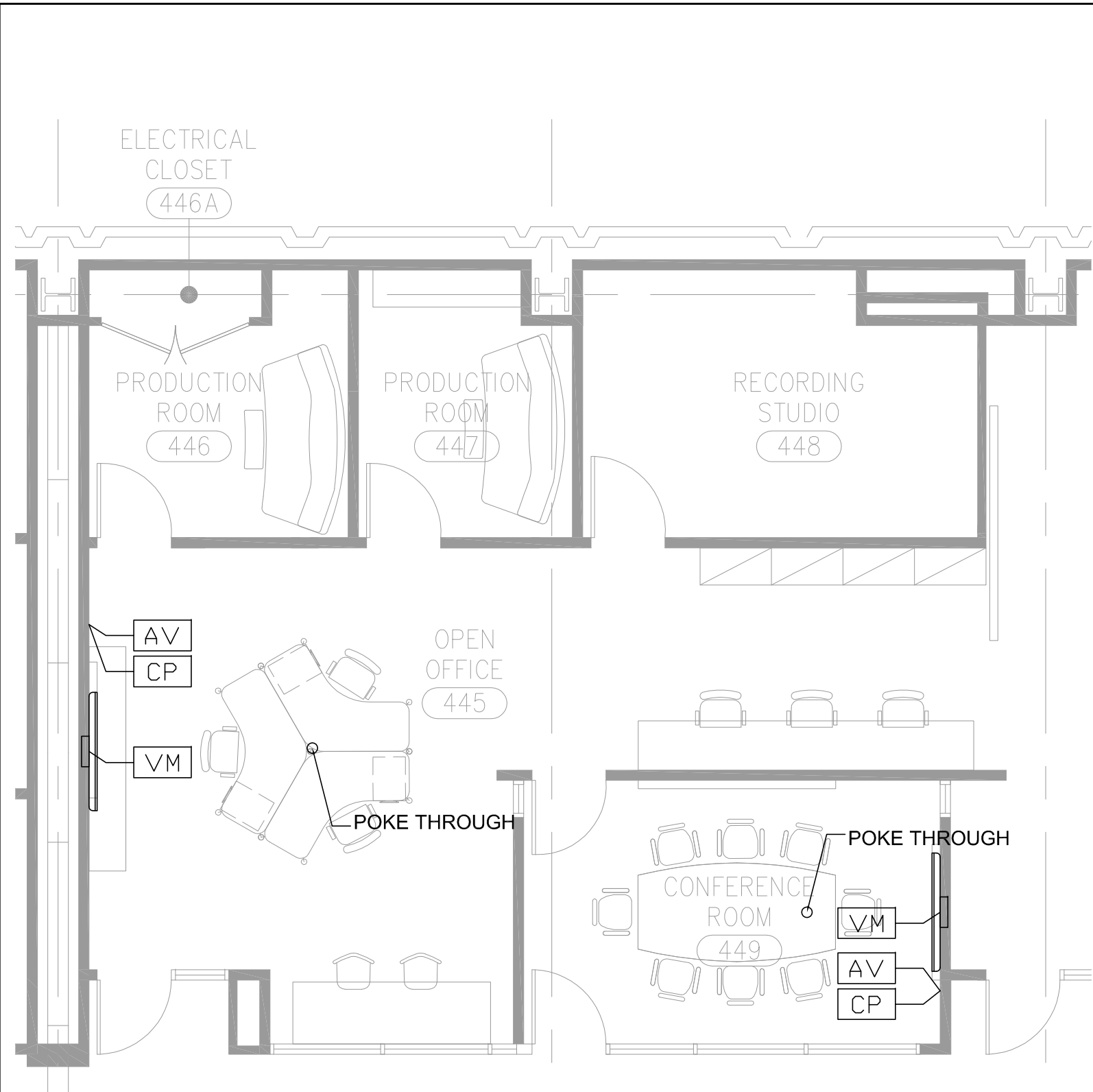
ABBREVIATIONS

- AV= AUDIO VIDEO INPUT PLATE AT +18"
- C= CEILING MOUNTED CAMERA
- CF= CENTER ON FURNITURE
- CP= CONTROL BUTTON PANEL AT +52"
- M1, M2= CEILING MOUNTED MICROPHONE
- S= RECESSED CEILING MOUNTED LOUDSPEAKERS
- VM= VIDEO MONITOR RECESS MOUNTED BACK BOX
FSR MODEL PWB-270
- VP= VIDEO PROJECTOR
- AT= AUDIO TELECONFERENCE UNIT
- A = CONTINUATION

NOTES

- A = CONTINUATION FROM THE OUTPUT OF THE DE EMBEDDER INTO THE INTERACT MIXER





1 FLOOR PLAN
3/16" = 1'-0"

ABBREVIATIONS

AV= AUDIO VIDEO INPUT PLATE AT +18"

CP= CONTROL BUTTON PANEL AT +52"

M1, M2= CEILING MOUNTED MICROPHONE

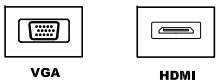
S= RECESSED CEILING MOUNTED LOUDSPEAKERS

VM= VIDEO MONITOR RECESS MOUNTED BACK BOX
FSR MODEL PWB-270

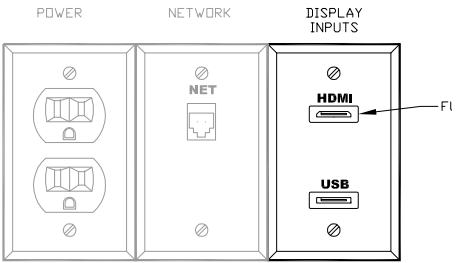
VP= VIDEO PROJECTOR

NOTES

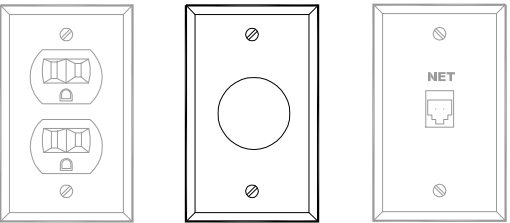
1. POWER AND DATA BEHIND EVERY MONITOR AND PROJECTOR




2 TABLE TOP CONECTORS
(BY TABLE SUPPLIER)

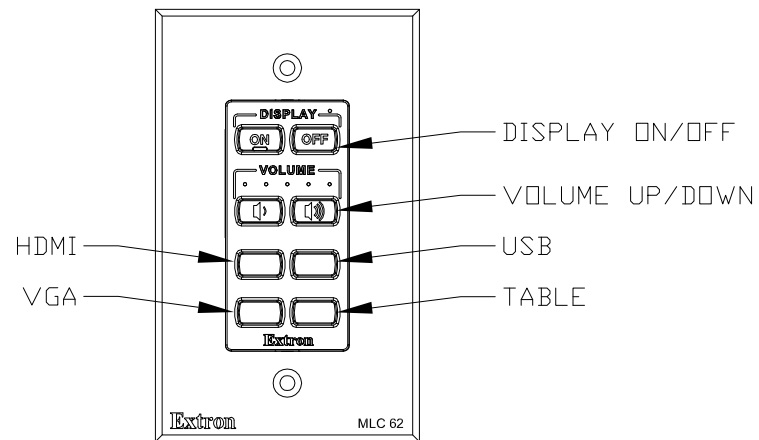


3 AV PLATE WALL MOUNTED
3" = 1'-0"



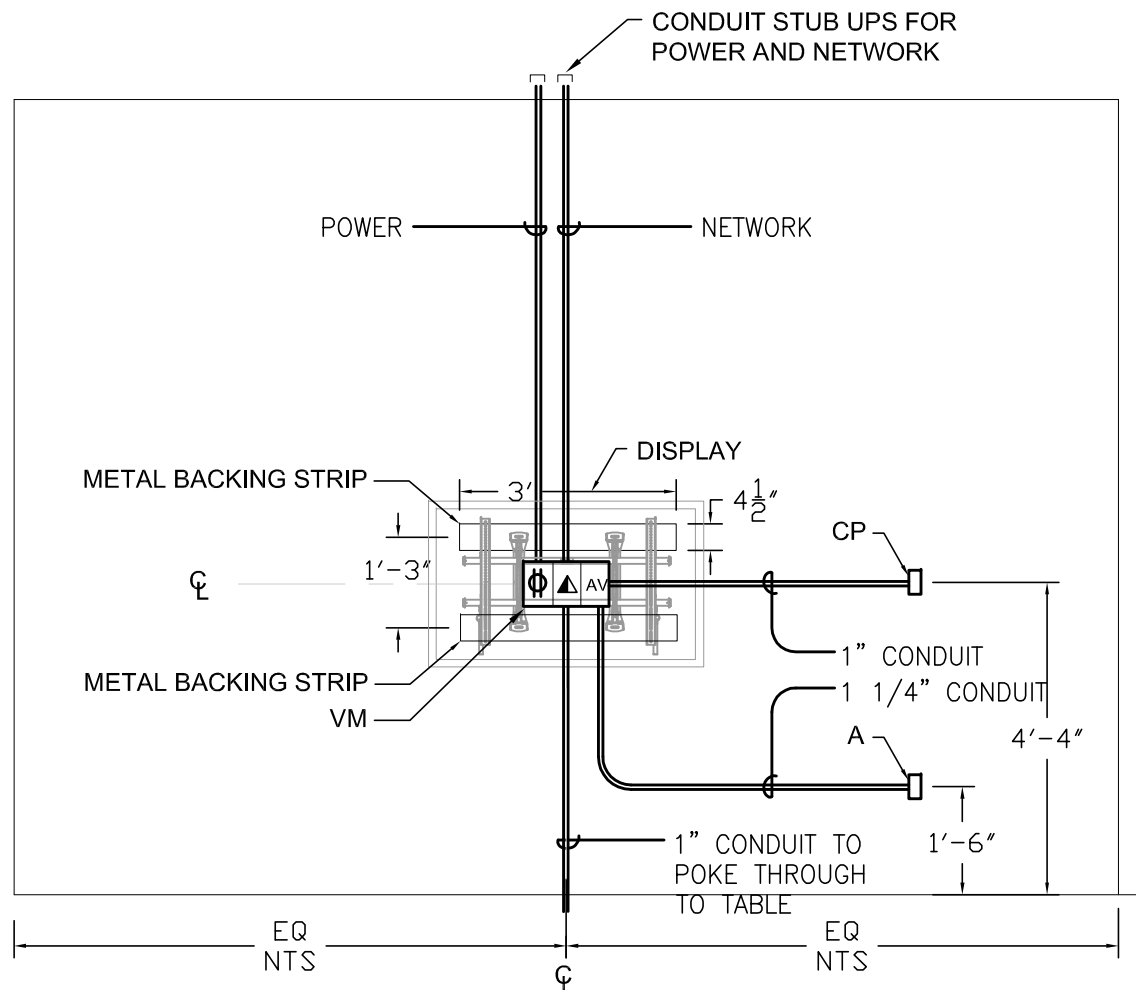
4 VM: VIDEO MONITOR
AV PLATES INSIDE PWB BACK-BOX

AV-04	OFFICE AREA PLAN AND PLATES AND PANELS				© 2014 CHARLES M. SALTER ASSOCIATES, INC.	 CHARLES M SALTER ASSOCIATES INC ACOUSTICS • AUDIOVISUAL • TELECOMMUNICATIONS • SECURITY 130 SUTTER STREET, FLOOR 5 SAN FRANCISCO, CA 94104 TEL (415)397-0442
	SHEETS REF: TBD	UC HASTINGS				
	REVISION:	PROJ #: TBD	DATE: 12/10/14	DRAWN: AEM	CHECK: TJC	



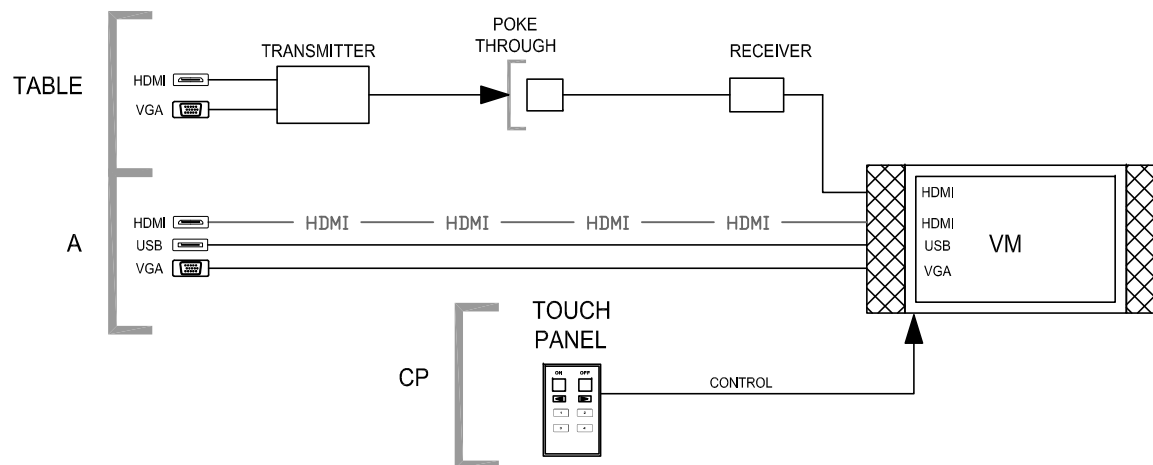
2 CP: DISPLAY CONTROL BUTTON PANEL

6"=1'-0"

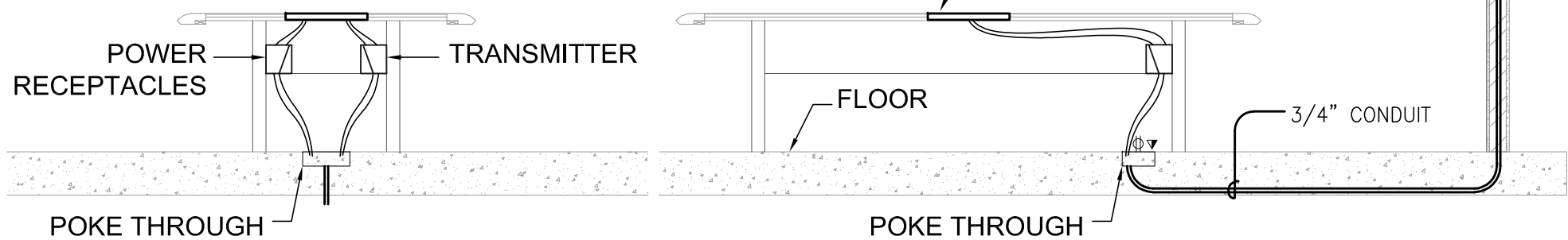


1 VIDEO MONITOR ELEVATION

NTS



4 OPEN AREA FUNCTIONAL



3 OPEN AREA SECTION

NTS

5 OPEN AREA SECTION

NTS

ABBREVIATIONS

AV= AUDIO VIDEO INPUT PLATE AT +18"

C= CEILING MOUNTED CAMERA

CF= CENTER ON FURNITURE

CP= CONTROL BUTTON PANEL AT +52"

M1, M2= CEILING MOUNTED MICROPHONE

S= RECESSED CEILING MOUNTED LOUDSPEAKERS

VM= VIDEO MONITOR RECESS MOUNTED BACK BOX
FSR MODEL PWB-270

VP= VIDEO PROJECTOR

AV-05

OPEN AREA FUNCTIONAL DIAGRAM

SHEETS REF:
TBD

UC HASTINGS

REVISION:

PROJ #: TBD

DATE: 12/10/14

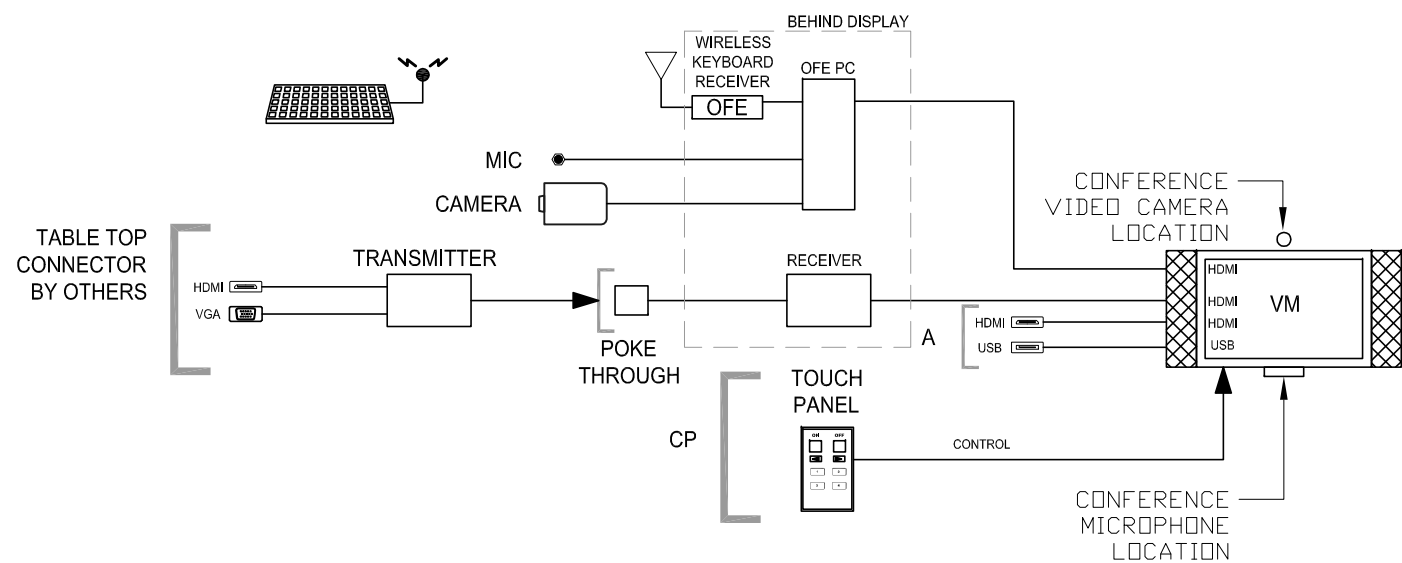
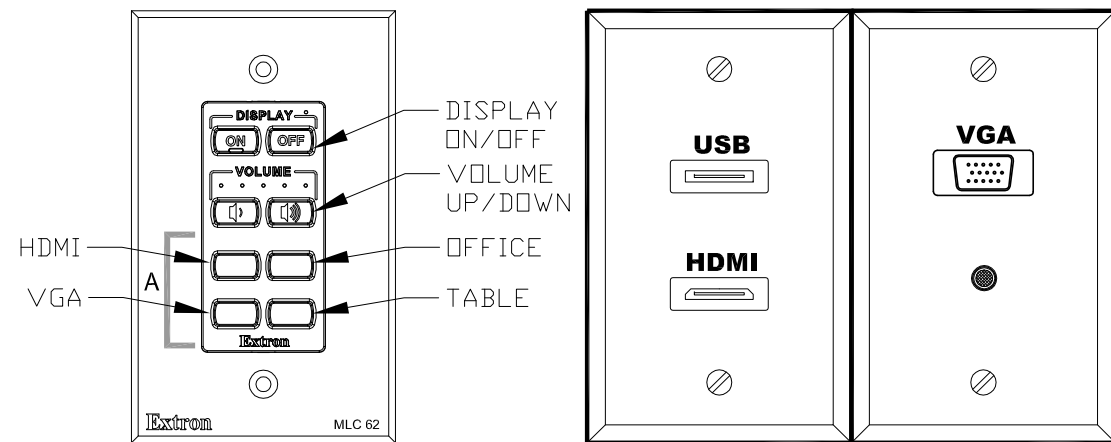
DRAWN: AEM

CHECK: TJC

© 2014 CHARLES M. SALTER ASSOCIATES, INC.



130 SUTTER STREET, FLOOR 5
SAN FRANCISCO, CA 94104
TEL (415)397-0442

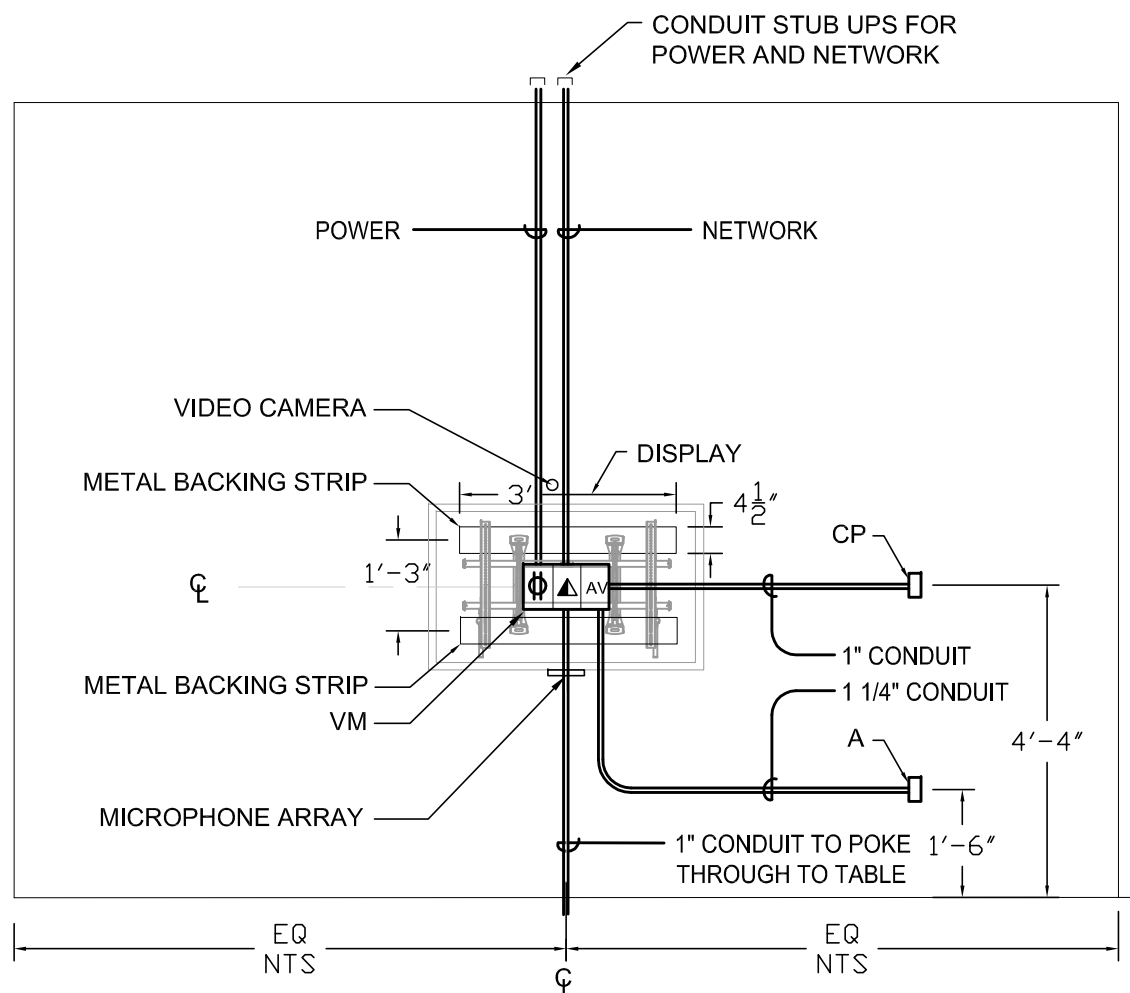


ABBREVIATIONS

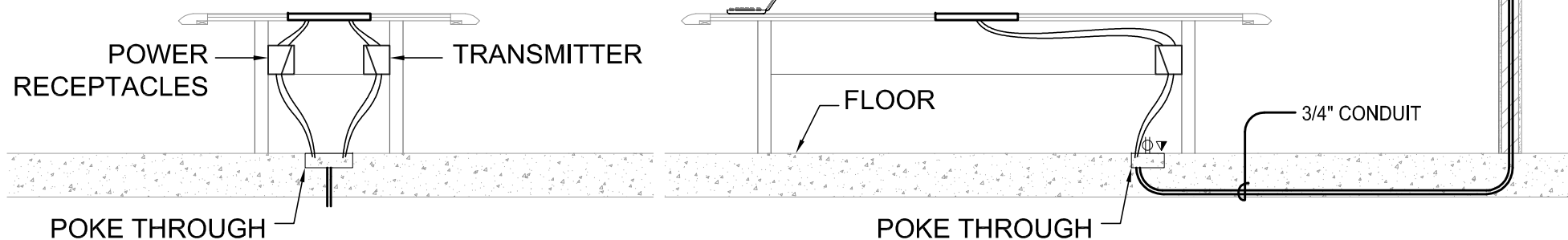
- AV= AUDIO VIDEO INPUT PLATE AT +18"
- C= CEILING MOUNTED CAMERA
- CF= CENTER ON FURNITURE
- CP= CONTROL BUTTON PANEL AT +52"
- M1, M2= CEILING MOUNTED MICROPHONE
- S= RECESSED CEILING MOUNTED LOUDSPEAKERS
- VM= VIDEO MONITOR RECESS MOUNTED BACK BOX
FSR MODEL PWB-270
- VP= VIDEO PROJECTOR

2 CP: DISPLAY CONTROL BUTTON PANEL & "A" PLATE
6"=1'-0"

4 CONFERENCE ROOM FUNCTIONAL
NTS



1 VIDEO MONITOR ELEVATION
NTS



3 CONFERENCE ROOM SECTION
NTS

5 CONFERENCE ROOM SECTION
NTS

AV-06

CONFERENCE ROOM FUNCTIONAL DIAGRAM

SHEETS REF:
TBD

UC HASTINGS

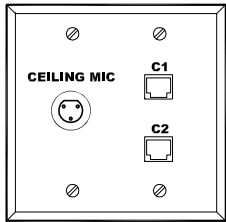
REVISION:

PROJ #: TBD

DATE: 12/10/14

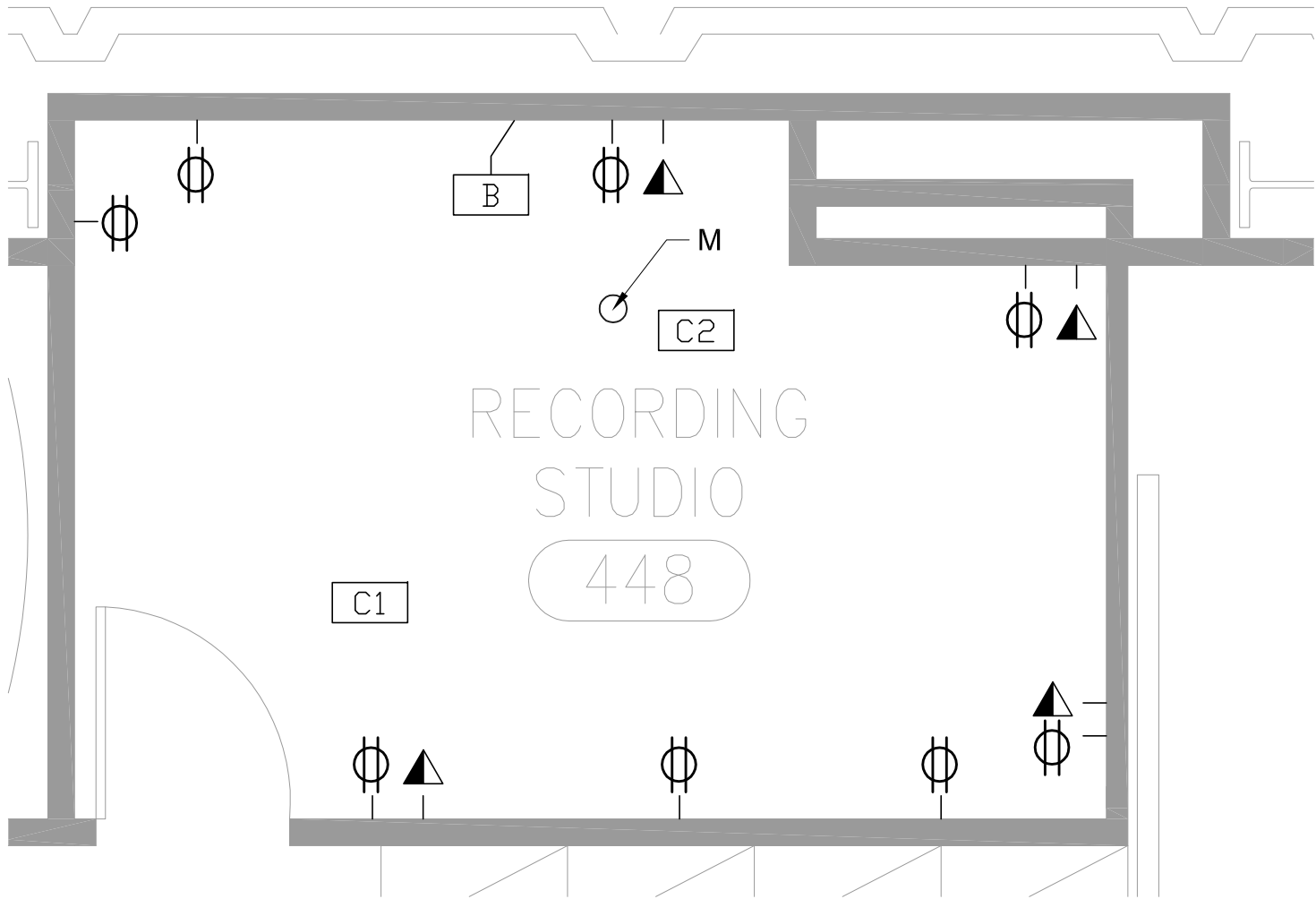
DRAWN: AEM

CHECK: TJC



2

B: CEILING CONNECTION



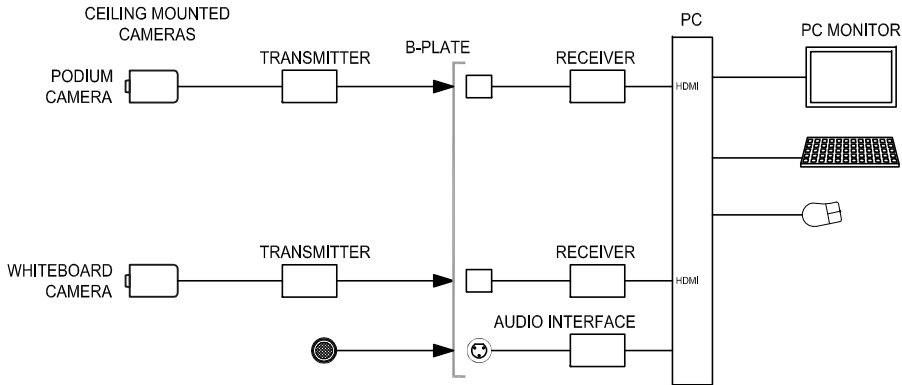
1

FLOOR PLAN

3/8" = 1'-0"

3

RECORDING STUDIO FUNCTIONAL: PODIUM



ABBREVIATIONS

AV= AUDIO VIDEO INPUT PLATE AT +18"

B= CEILING CONNECTION; WALL MOUNTED DOUBLE-GANG BACKBOX WITH 1" CONDUIT STUB TO CEILING

VC= VIDEO CAMERA ABOVE MONITOR

VDx= VIDEO DISPLAY INPUT

Cx= CEILING CAMERA

CP= CONTROL BUTTON PANEL AT +52"

CM= CONFERENCE MICROPHONES UNDER MONITOR

M= MICROPHONE

S= RECESSED CEILING MOUNTED LOUDSPEAKERS

VM= VIDEO MONITOR RECESS MOUNTED BACK BOX FSR MODEL PWB-270.

VP= VIDEO PROJECTOR

PT= POKE THROUGH WIRE MOLD

NOTES

1. POWER AND DATA BEHIND EVERY MONITOR AND PROJECTOR

AV-07

RECORDING STUDIO PLAN AND PLATES AND PANELS

SHEETS REF:
TBD

UC HASTINGS

REVISION:

PROJ #: TBD

DATE: 12/10/14

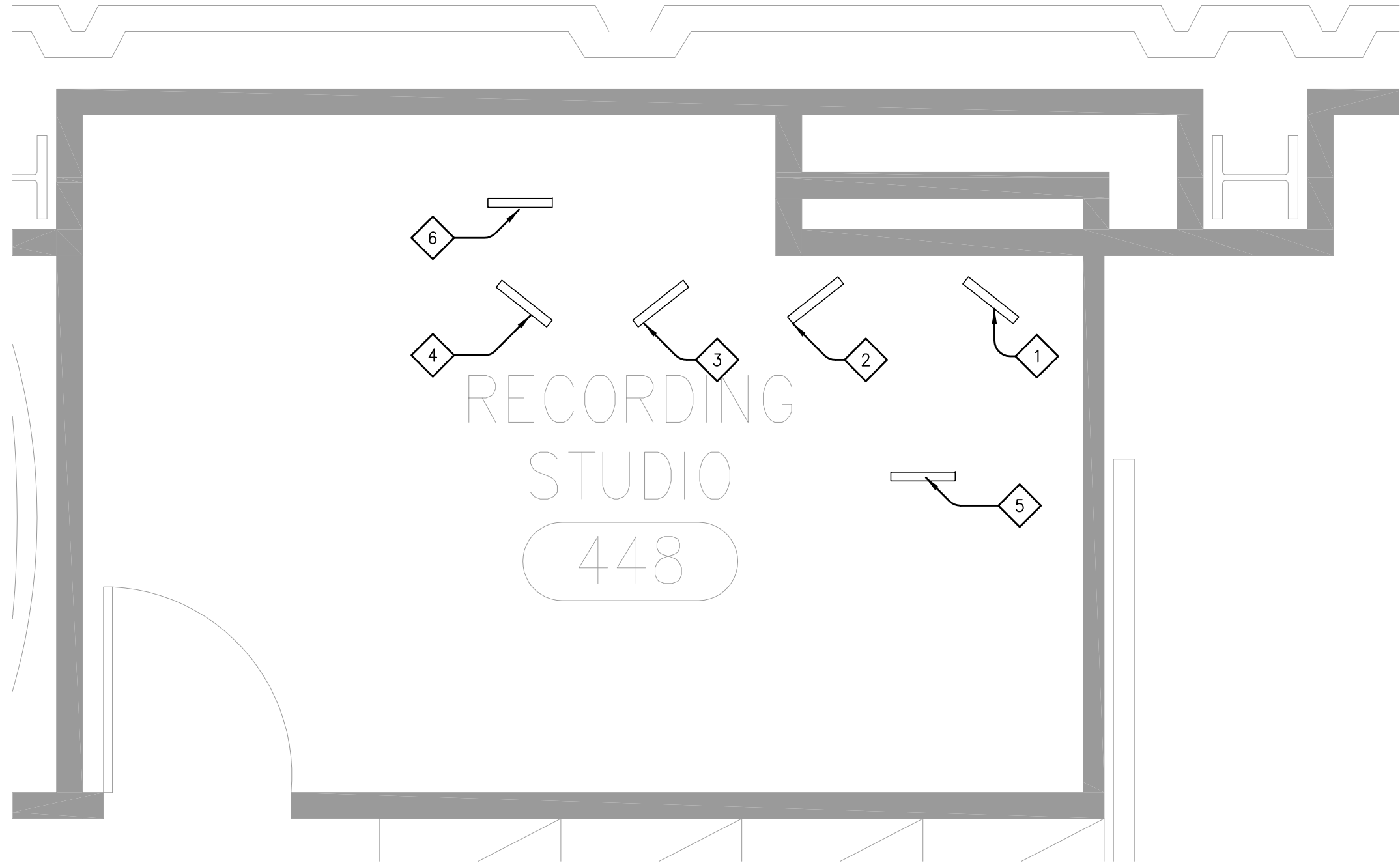
DRAWN: AEM

CHECK: TJC

© 2014 CHARLES M. SALTER ASSOCIATES, INC.



130 SUTTER STREET, FLOOR 5
SAN FRANCISCO, CA 94104
TEL (415)397-0442




1 LIGHTING PLAN
1/2" = 1'-0"

NOTES

- 1. POWER AND DATA BEHIND EVERY MONITOR AND PROJECTOR
- 2. CEILING LIGHTS HUNG ON TILE GRID
- 3. POWER AND CONTROL CABLES HUNG ON TILE GRID. ROUTE TO WALL HOOKS.

KEY NOTES

- CEILING LIGHTS:
- 1, 2 KEY AND FILL FOR WORKSTATION
 - 3, 4 KEY AND FILL FOR PODIUM
 - 5, 6 BK LIGHTS

AV-08	© 2014 CHARLES M. SALTER ASSOCIATES, INC.					 CHARLES M SALTER ASSOCIATES INC ACOUSTICS • AUDIOVISUAL • TELECOMMUNICATIONS • SECURITY 130 SUTTER STREET, FLOOR 5 SAN FRANCISCO, CA 94104 TEL (415)397-0442
	RECORDING STUDIO LIGHTING PLAN					
	SHEETS REF: TBD	UC HASTINGS				
	REVISION:	PROJ #: TBD	DATE: 12/10/14	DRAWN: AEM	CHECK: TJC	